

**INSTRUCTIONS FOR SUBMITTING EYE SPECIMENS
THE OPHTHALMIC PATHOLOGY LABORATORY
HOUSTON METHODIST HOSPITAL**

Table of Contents

| Sample | Page |
|---|------|
| Aqueous humor | 1 |
| Vitreous | 1 |
| Corneal scraping for infectious diseases | 2 |
| Corneal scraping for neoplasia or other non-infectious diseases | 3 |
| Choroid biopsy/retina biopsy | 3 |
| Conjunctiva for neoplastic lesions or melanocytic lesions | 4 |
| Conjunctiva or skin lesions for bullous diseases or OCP | 4 |
| Frozen sections | 5 |
| Enucleations for fresh tumor retrieval (Houston area ONLY) | 5 |
| Regular specimens in formalin (cornea, conjunctiva, skin, enucleations, evisceration, gross only specimens, etc.) | 5 |

Aqueous Humor

1. Submit fluid in a syringe closed with a syringe cap (not needle).
2. **Label** syringe clearly with the patient's name and identifying information (or hospital sticker).
3. Write on the label the site ("*right/left eye*") and "*aqueous humor*"
4. Place syringe in a specimen bag on ice or ice pack with appropriate requisition form filled out and deliver ASAP via ground transportation (courier) or Fed Ex (for logistics of delivery contact representative Debbie Patterson at 281-732-1503; dlpatterson@houstonmethodist.org)
5. Please provide a detailed history and any specific questions to be answered
6. If viral PCR studies are requested (HSV, HZV, CMV, etc), at least 200 microliters of fluid (0.2 ml) is required. If other studies are needed (cytology), please provide additional fluid (ideally at least 0.4ml total).
7. Please leave fluid in the syringe (do not transfer to other container), the sample will be distributed as needed in our laboratory.

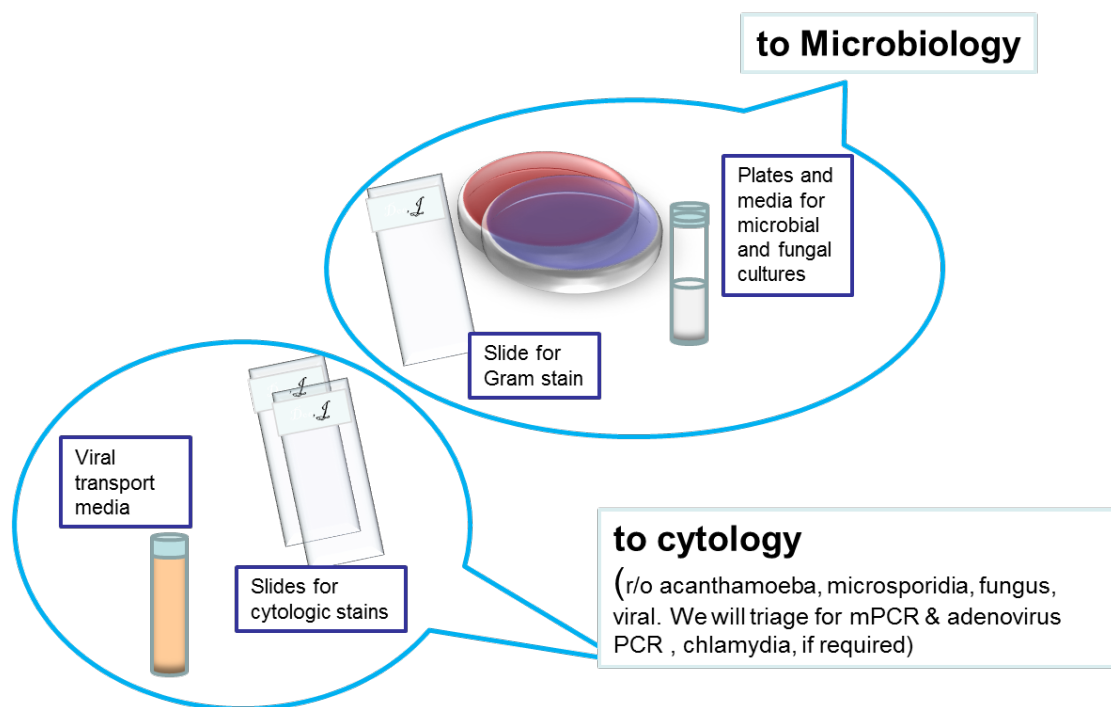
Vitreous

1. Submit *undiluted* vitreous in a syringe closed with a syringe rubber cap (not needle) (if you need supply of rubber caps contact representative Debbie Patterson at 281-732-1503; dlpatterson@houstonmethodist.org)
2. Submit *diluted* vitreous in the cassette or bag (directly from the vitrectomy machine)
3. **Label** syringe and/or cassette/bag clearly with the patient's name and identifying information (or hospital sticker)
4. Please write the following information on the label: site ("*right/left eye*") and "*vitreous, diluted*" or "*vitreous, undiluted*"

5. Place in a specimen bag on regular ice or ice pack with appropriate requisition form filled out and deliver ASAP via ground transportation (courier) or Fed Ex (for logistics of delivery contact representative Debbie Patterson at 281-732-1503; dlpatterson@houstonmethodist.org)
6. Please provide a detailed history and any specific questions to be answered in the requisition form
7. If viral PCR studies are requested (HSV, HZV, CMV, etc), at least 200 microliters (0.2 ml) of *undiluted vitreous* is required. If other studies (cytology) are needed, please provide additional fluid (ideally at least 0.4ml total).
8. All other studies (culture, flow cytometry, special stains, etc) can be performed with the remaining fluid, diluted or undiluted

Corneal Scraping for Infectious Diseases

1. Usually done for atypical corneal infectious presentations.
2. At least two slides need to be submitted, ideally 3-4 slides are requested.
3. We can provide the slides for the smears (for delivery contact representative Debbie Patterson at 281-732-1503; dlpatterson@houstonmethodist.org)



Corneal Scraping for Neoplasia or Other Non-infectious Diseases

1. Wash the instrument used for scraping into Cytolyt media for liquid based-cytology
2. We can provide Cytolyt in advance (for delivery contact representative Debbie Patterson at 281-732-1503; dlpatterson@houstonmethodist.org)



Choroid Biopsy/Retina Biopsy

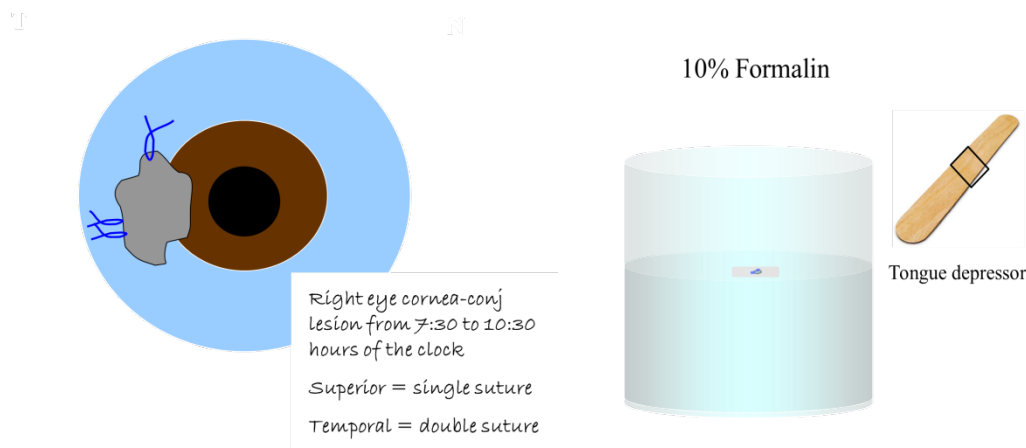
1. If you are performing the biopsy at Houston Methodist Hospital please call us (713-363-2248) in advance as we offer to do adequacy check on site during the biopsy to assure adequate specimen sampling. We would then take care of the specimen as necessary.
2. If you are performing the biopsy elsewhere please follow the instructions below but call in advance to talk to Dr. Chévez-Barríos or Dr. Mukul Divatia (713-363-2248) to assure the specimen will be received and handled immediately.
3. Ideally the biopsy should be divided in two: one-half fresh (without any fixative) and one-half fixed in formalin.
4. For fresh specimens, submit specimen in a sterile specimen cup (see below for more on fluid added in the cup) labeled clearly with the patient's name and identifying information (or hospital sticker label)
5. Please write the following information on the label: site ("*right/left eye*") and type of specimen, e.g. "*retina*" or "*choroid*"
6. Place in a specimen bag on ice or ice pack, with the appropriate requisition form filled out, and deliver ASAP via ground transportation (courier) or Fed Ex (for logistics of delivery contact representative Debbie Patterson at 281-732-1503; dlpatterson@houstonmethodist.org)
7. Please provide a detailed history and any specific questions to be answered
8. Regarding **transport media in the specimen cup**:
 - For flow cytometry (to rule out lymphoma):
Please send tissue *fresh* in a minimum amount of RPMI (just enough to cover the tissue – we can provide RPMI in advance) (for supply of RPMI contact representative Debbie Patterson at 281-732-1503; dlpatterson@houstonmethodist.org) on ice or ice pack and deliver *immediately* via ground transportation or Fed Ex (for logistics of delivery contact representative Debbie Patterson at 281-732-1503; dlpatterson@houstonmethodist.org)
 - For cultures and/or PCR studies:
Please send the tissue *fresh* in a minimum amount of PBS (just enough to cover the

tissue), on ice or ice pack, and deliver *immediately* via ground transportation or Fed Ex; it will be distributed (triaged) as needed once received in the lab (for logistics of delivery contact representative Debbie Patterson at 281-732-1503; dlpatterson@houstonmethodist.org)

- For all other standard studies (histologic examination, special stains, and immunohistochemistry) or malignancy other than lymphoma, submission in 10% neutral buffered formalin is adequate

Conjunctiva for Neoplastic Lesions or Melanocytic Lesions

1. Please orient the lesion placing small sutures or ink in the tissue and with a drawing and specify hour of clock for location so margins may be assessed.
2. Place the conjunctival biopsy on a piece of thick paper, cardboard or a precut piece of wooden tong depressor.
3. Let it stand on this material for at least 2 minutes before placing on the formalin.
4. Place the piece of paper, cardboard or tong depressor gently on the formalin and let it sink on itself.
5. Formalin container should be labeled with patient's name and laterality.



Conjunctiva or Skin Lesions for Bullous Diseases or OCP

1. Please take two biopsies at least 2 mm each of lesion without much scarring.
2. Place one biopsy in 10% formalin
3. Place the other biopsy in Zeus transport media (for supply of Zeus media contact representative Debbie Patterson at 281-732-1503; dlpatterson@houstonmethodist.org)
4. Please specify your differential diagnosis

Please send specimens that are FRESH by FedEx, adequately labeled, in biosafety bag and on ice packs:

For logistics of delivery contact representative Debbie Patterson
Phone: 281-732-1503; dlpatterson@houstonmethodist.org

Frozen Sections

1. Submit specimen fresh as soon as possible on a piece of wet (PBS) telfa or by itself in container (labeled with patient's name and site of biopsy)
2. Fill out FROZEN SECTION requisition form with main Diagnosis or Differential Diagnosis, previous biopsy results, and main question to be answered. If specimen is submitted for margin evaluation please write down orientation or include drawing with orientation of margins.
3. Send specimen to **OPC building 19th Floor - Frozen Section**

AFTER HOURS, WEEKENDS OR HOLIDAYS:

- If you know about the case in advance during working hours please contact Dr. Chevez-Barrios (713-441-6484) to discuss the case.
- If this is an emergency case occurring during these times please contact the pathologist on call (pager operator provides the name of pathologist on call or look at name posted on the door of the frozen section room M310).

Enucleations for fresh tumor retrieval (City of Houston area ONLY):

Please contact Dr. Chevez-Barrios or Dr. Mukul Divatia at 713-363-2248 in advance to arrange delivery and logistics of handling the specimen immediately after enucleation.

Regular specimens in formalin (cornea, conjunctiva, skin, enucleations, evisceration, gross only specimens, etc.)

You could use **regular mail** (using address below) or by **courier** (for logistics of delivery contact representative Debbie Patterson at 281-732-1503; dlpatterson@houstonmethodist.org) to send the specimens in formalin after sealing the container and placing it in a double red bag in a box with packing material.

Regular mail:

Attn: Dr. Chévez-Barrios
Houston Methodist Diagnostic Laboratories
6565 Fannin St., Dunn Tower
Second Floor, D2-109
Houston, TX 77030
Phone: 713-441-4411

Otherwise someone can also deliver the specimen to us in person at:

Department of Pathology and Genomic Medicine
Houston Methodist Hospital
6565 Fannin St
Main building, second floor, room M247
(Attention: Dr. Chevez-Barrios) phone 713-441-1250