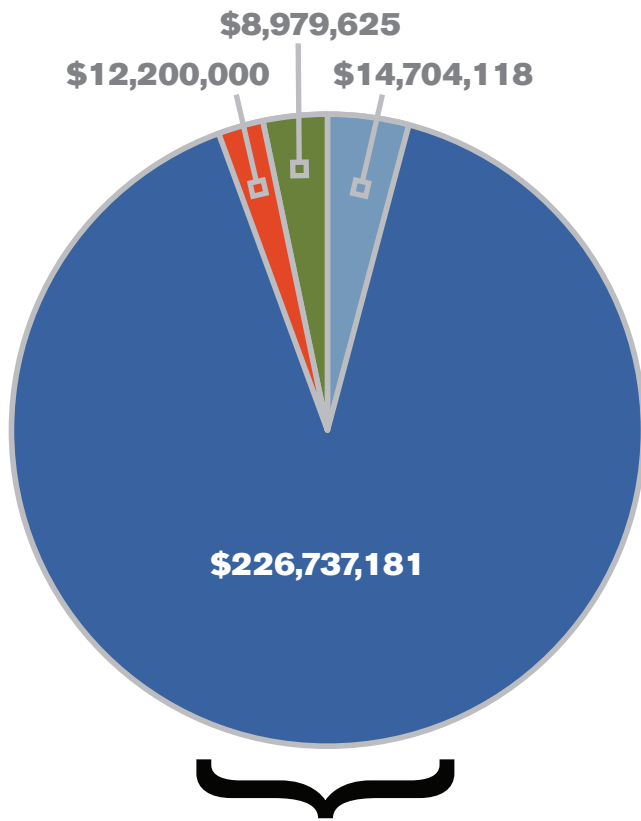


Charity Care and Community Benefits



- MEDICALLY INDIGENT
- FINANCIALLY INDIGENT
- GOVERNMENT SPONSORED INDIGENT CARE
- INTERNAL PROGRAMS

INTERNAL CHARITY CARE \$262,620,924

YEAR ENDING DECEMBER 31, 2018

CHARITY CARE

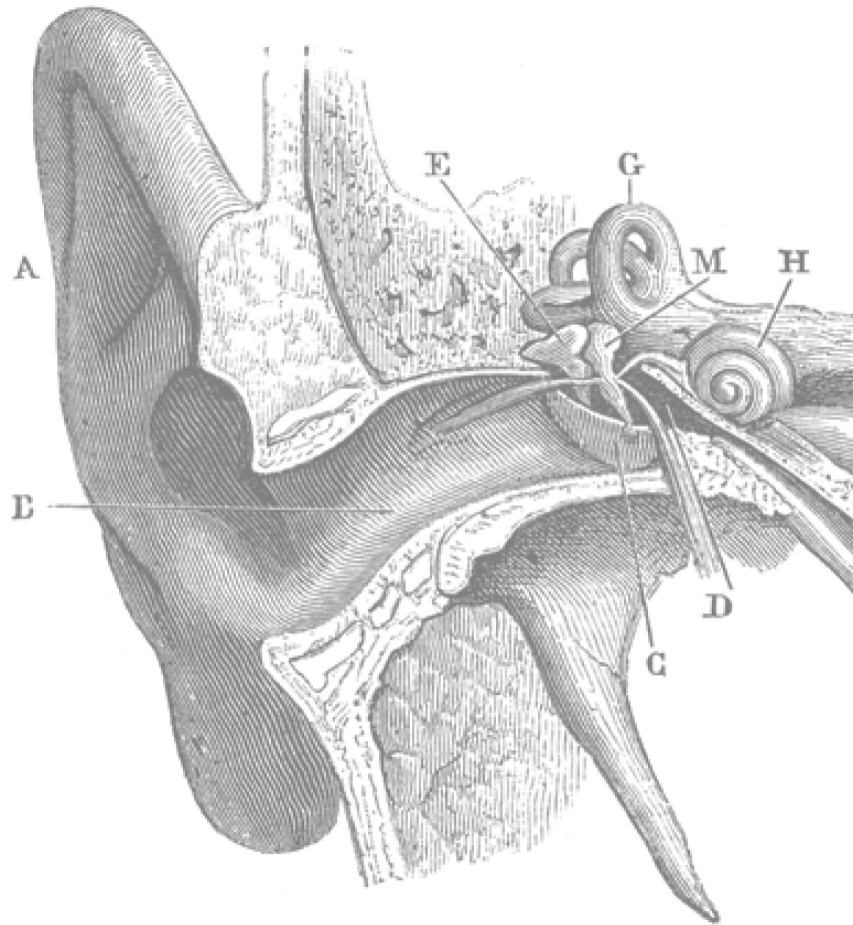
AS PERCENTAGE OF NET PATIENT REVENUE

7.7%

CHARITY CARE PROVIDED IN EXCESS

AMOUNT OF DOLLARS SPENT OVER THE AVERAGE STANDARD GIVEN

\$144,248,456



2018 NET PATIENT REVENUE

\$3,887,864,159

TOTAL CHARITY CARE

\$299,763,022

INTERNAL CHARITY CARE

\$262,620,924

The Internal charity care program provides services to the indigent at Houston Methodist and through affiliated organizations. Patients qualified for our charity care were often identified through referrals by their physicians, hospital staff, other patients and our community agencies. The program maintains an eligibility system for patients treated at Houston Methodist based on financial and other criteria.

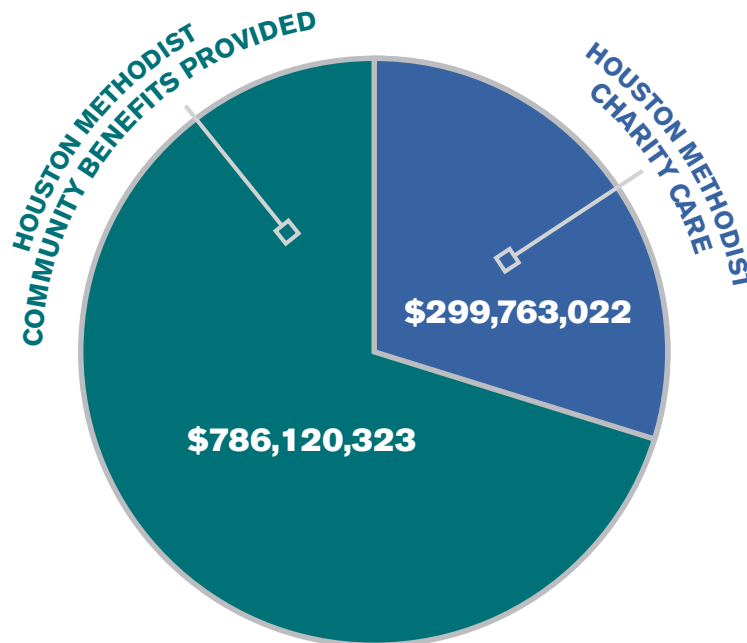
EXTERNAL CHARITY CARE

\$37,142,098

The external charity care program provides services to the medically needy through external organizations that are already meeting the health care needs that Houston Methodist has identified as priorities.

Community Benefits Activities

Total charity care and community benefits contributions in 2018 totaled more than \$1 billion. Charity care is free or discounted health and health-related services to people who cannot afford to pay. Charity care does not include bad debt. Community benefits are programs and services designed to improve health in communities and increase access to health care. Such programs at Houston Methodist include donation of medical supplies and overall support of community agencies providing assistance to underserved communities.



TOTAL COMMUNITY BENEFITS

\$786,120,323

Houston Methodist responded to the community's needs not only through the provision of medical care, but also through research, education of health professionals and patients, community health education, donations to health care-related events and other services.



DONATIONS & COMMUNITY BENEFITS ACTIVITIES

\$2,188,304

HEALTH CARE PROFESSIONAL EDUCATION & RESEARCH ACTIVITIES

\$137,661,628

GOVERNMENT SPONSORED (MEDICARE)

\$646,270,391

COMMUNITY BENEFITS AS A PERCENTAGE OF NET PATIENT REVENUE

20.2%

TOTAL CHARITY CARE AND COMMUNITY BENEFITS AS A PERCENTAGE OF NET PATIENT REVENUE

27.9%

TOTAL CHARITY CARE AND COMMUNITY BENEFITS PROVIDED

\$1,085,883,345

COMMUNITY BENEFITS PROVIDED IN EXCESS

AMOUNT OF DOLLARS SPENT OVER THE AVERAGE STANDARD GIVEN

\$747,241,681