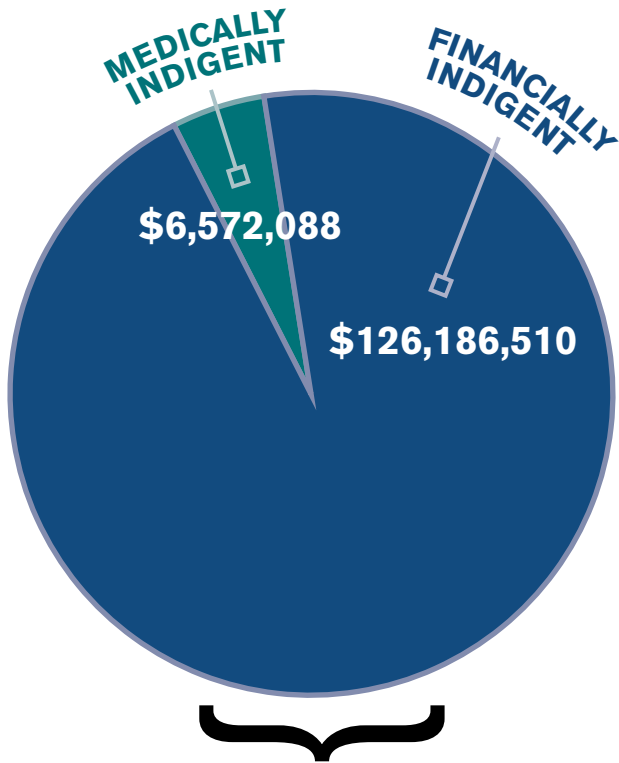
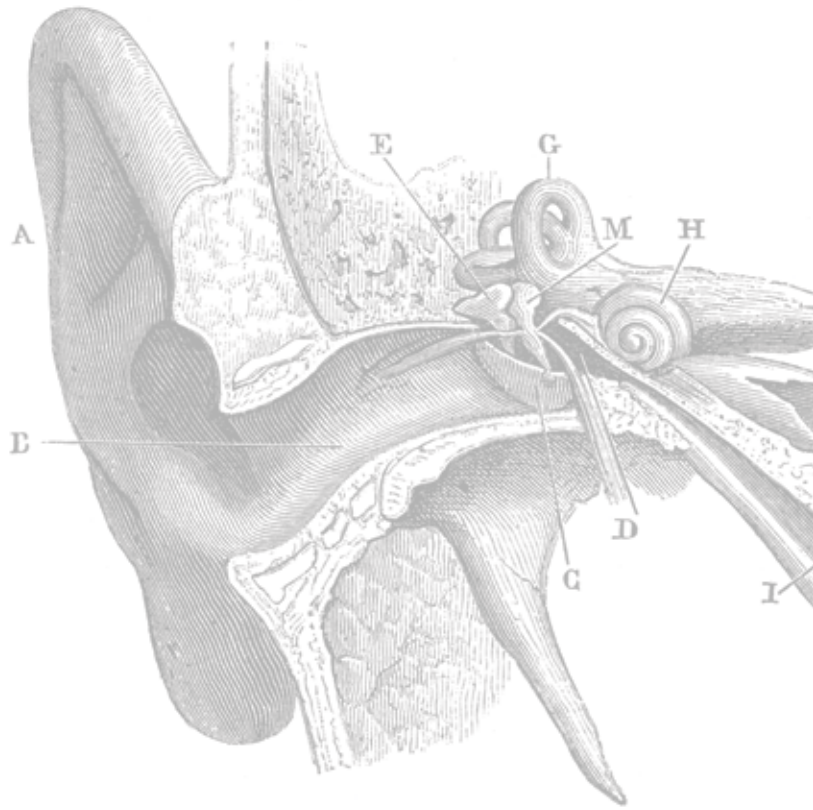


# Charity Care and Community Benefits



**INTERNAL CHARITY CARE \$132,758,598**

YEAR ENDING DECEMBER 31, 2016

**CHARITY CARE**  
AS PERCENTAGE OF NET PATIENT REVENUE

**7.3%**

**CHARITY CARE PROVIDED IN EXCESS**  
AMOUNT OF DOLLARS SPENT OVER THE AVERAGE STANDARD GIVEN

**\$106,014,559**

## 2016 NET PATIENT REVENUE

\$3,259,980,301

## TOTAL CHARITY CARE

\$236,413,771

## INTERNAL CHARITY CARE

\$132,758,598

The Internal charity care program provides services to the indigent at Houston Methodist and through affiliated organizations. Patients qualified for our charity care were often identified through referrals by their physicians, hospital staff, other patients and our community agencies. The program maintains an eligibility system for patients treated at Houston Methodist based on financial and other criteria.

## EXTERNAL CHARITY CARE

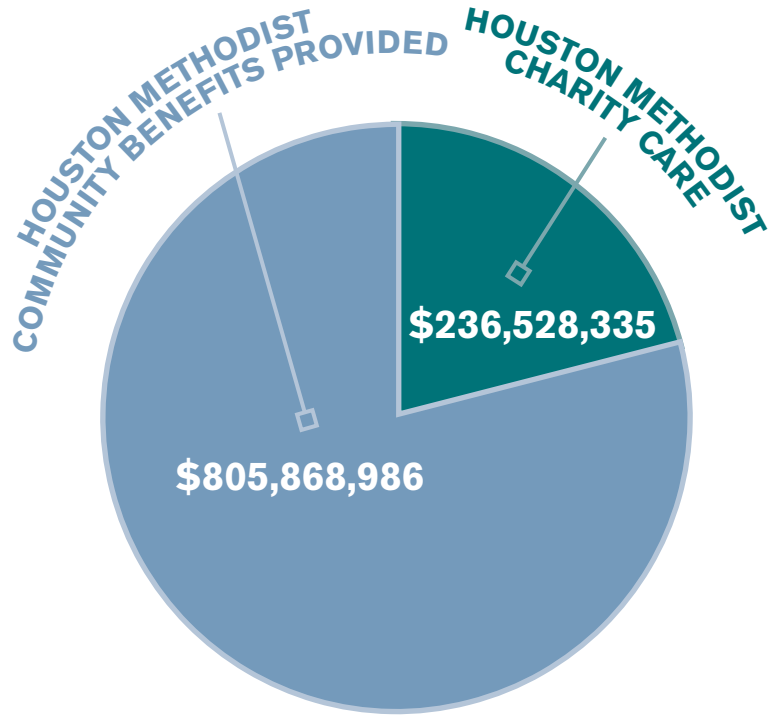
\$103,655,173

The external charity care program provides services to the medically needy through external organizations that are already meeting the health care needs that Houston Methodist has identified as priorities.

# Community Benefits **Activities**

**Total charity care and community benefits contributions in 2016 totaled more than \$1 billion.**

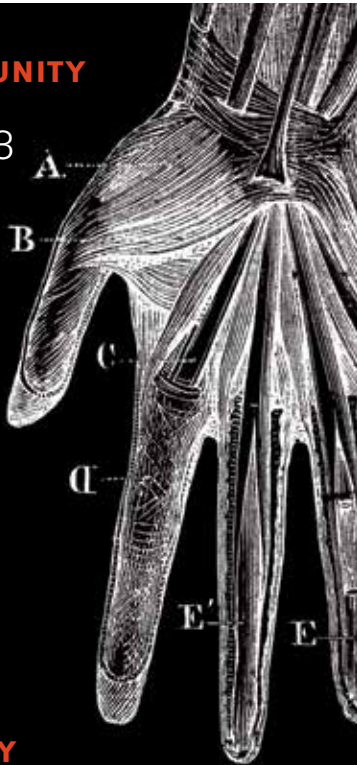
Charity care is free or discounted health and health-related services to people who cannot afford to pay. Charity care does not include bad debt. Community benefits are programs and services designed to improve health in communities and increase access to health care. Such programs at Houston Methodist include donation of medical supplies and overall support of community agencies providing assistance to underserved communities.



## TOTAL COMMUNITY BENEFITS

\$805,542,103

Houston Methodist responded to the community's needs not only through the provision of medical care, but also through research, education of health professionals and patients, community health education, donations to health care-related events and other services.



## DONATIONS & COMMUNITY BENEFITS ACTIVITIES

\$1,971,590

## HEALTH CARE PROFESSIONAL EDUCATION & RESEARCH ACTIVITIES

\$121,853,290

## GOVERNMENT SPONSORED (MEDICARE)

\$678,417,274

## COMMUNITY BENEFITS AS A PERCENTAGE OF NET PATIENT REVENUE

24.7%

## TOTAL CHARITY CARE AND COMMUNITY BENEFITS

AS A PERCENTAGE OF NET PATIENT REVENUE

32.0%

## TOTAL CHARITY CARE AND COMMUNITY BENEFITS PROVIDED

\$1,041,955,874

## COMMUNITY BENEFITS PROVIDED IN EXCESS |

AMOUNT OF DOLLARS SPENT OVER THE AVERAGE STANDARD GIVEN

\$772,942,300